



Chuma Makuba
061 505 7028
chuma.makuba@rentalsdc.co.za



Yonela Mgugudo
061 508 2617

admin.asante@rentalsdc.co.za

Contact RentalsDotCom Asante

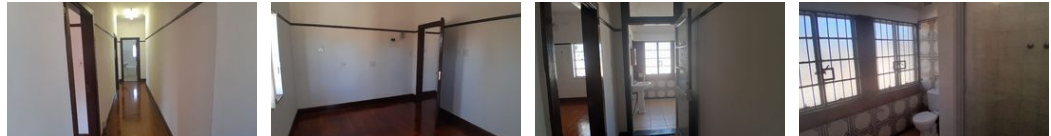
047 0040044

9a Park Road
Umtata Central
Mthatha
5100

RENTED



Web Ref CL2295



R25,000 per m²

Gross Monthly Rental R25,000 Excl. VAT

 0  0

Commercial Property to rent in Mthatha

Unlock the potential of your business with this exceptional well-sized commercial property located in the heart of Mthatha. This strategically positioned building offers high visibility and foot traffic, making it ideal for office space, or hospitality ventures.

This property offers 5 offices, a boardroom, kitchen, storeroom, bathrooms and an additional toilet plus shower outside. There is plenty of parking space for staff and clients. The property has spacious interior with flexible layout options. High ceilings and large windows for natural light.

Location is in close proximity to major transport routes and other amenities in an established neighborhood with a growing customer base.

With Mthatha's thriving economy and new development projects underway, this property represents a sound investment for

Features

Zoning Commercial

Interior

Floor Loading Cap. 20 Tn/m²
Air Conditioning Yes

Exterior

Security Yes

Sizes

Floor Size 130m²

Extras

24 Hour Access Accommodation Bath, Toilet and Basin Burglar Bars Curtain Rails Driveway
Ground Floor Office Perimeter Wall Carport Secure Parking